



# GAT MONTHLY MEMBERSHIP PROGRESS REPORT

Results as of: 4/30/2024

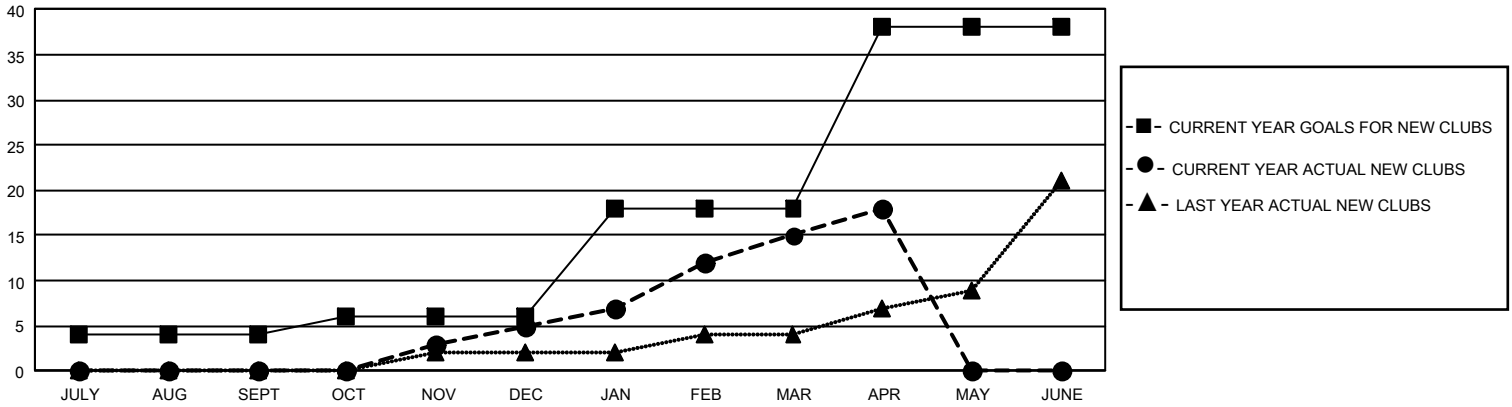
## GMT Constitutional Area 4, Group H

REPORT DOES NOT INCLUDE CLUBS IN UNDISTRICTED AREAS.

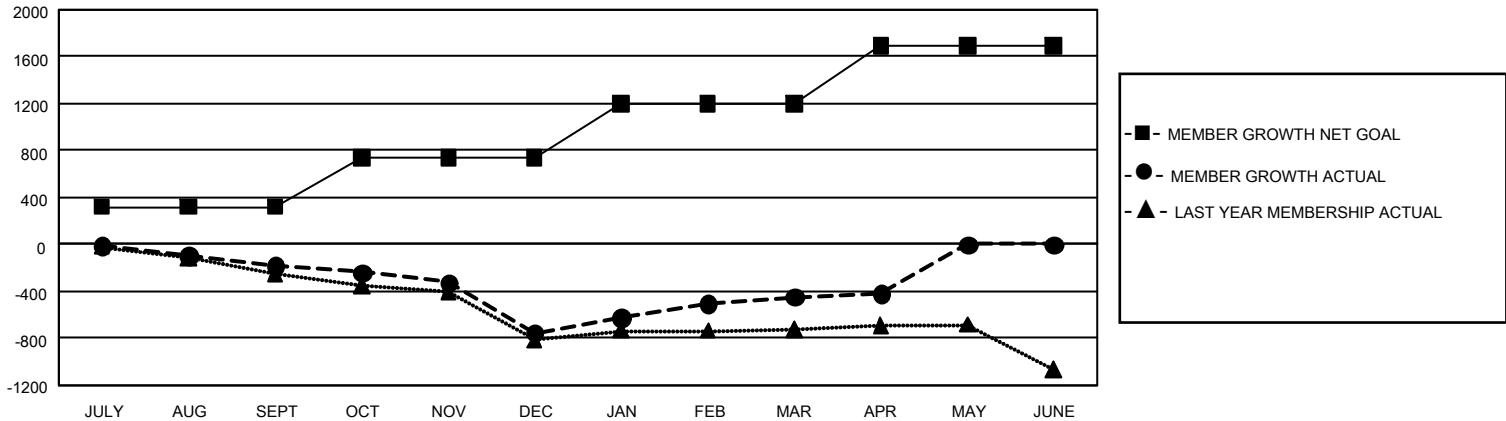
Clubs			
RESULTS FOR 2023-2024			
QUARTER	NEW CLUB GOAL	NEW CLUBS	DROPPED CLUBS
JULY/AUG/SEPT	12	0	11
OCT/NOV/DEC	6	5	7
JAN/FEB/MAR	36	10	6
APR/MAY/JUNE	60	3	0

Members			
RESULTS FOR 2023-2024			
QUARTER	MEMBER GROWTH NET GOAL	MEMBER GROWTH ACTUAL	DROPPED MEMBERS ACTUAL (including transfers)
JULY/AUG/SEPT	319	476	567
OCT/NOV/DEC	421	684	1,134
JAN/FEB/MAR	460	1,022	604
APR/MAY/JUNE	495	334	273

GOALS AND ACTUAL NEW CLUBS CUMULATIVE



GOALS AND ACTUAL MEMBERS CUMULATIVE



DROPPED CLUBS: 24	791 CLUBS OF 1,479 ADDED 1 OR MORE NEW MEMBERS	<u>GENDER DISTRIBUTION</u>	
		MALE	22,685 (74.33%)
<u>DROPPED MEMBERS</u>		FEMALE	7,830 (25.66%)
		NON BINARY	1 (0.00%)
DECEASED	312	PREFER NOT TO ANSWER	2 (0.01%)
CLUB CANCELLED	118	TOTAL FAMILY UNIT MEMBERS 1,256	
OTHER	2,147		
TOTAL	2,577	FAMILY MEMBERS PAYING HALF DUES 632	
<a href="#">CLICK HERE FOR CUMULATIVE MEMBERSHIP DATA</a>			